



PACP
PORTUGUESE AMERICAN CITIZENSHIP PROJECT

A NON-PARTISAN INITIATIVE TO PROMOTE CITIZENSHIP AND CIVIC INVOLVEMENT

**CASA dos AÇORES
HILMAR, CA**

**EVALUATION
OF
THE 2012 ELECTIONS**

**PREPARED
APRIL 30, 2013**

Supported by Luso-American Foundation
Government of the Autonomous Region of the Azores
Business and Community Leaders in the Portuguese American Community

REPORT CONTENTS

Statistics and Summary of Work	2
Results	2
Results Graphs	3
Voter Turnout Summary	3
Voter Turnout by Age	4
Voter Turnout – 2008 vs. 2012 Presidential Elections	5
Appendices	6
Registered Voters by Age and Party	7
Voter Turnout by Age and Voting Method	8
Voter Turnout by Party and Voting Method	12
Registered vs. Actual Voters	14
Voted in both 2008 and 2012 Presidential Elections	15
Voted in all last three elections	15

Key Statistics – 2012

Voter turnout data received from Merced County February 26, 2013.

Casa dos Açores (*Merced County in italics*)

- Registered voters in Hilmar, Livingston and Stevenson with Portuguese last names: 1,917 (98,248)
- Voter Turnout - June 2012: 18.8% (25.3%)
- Voter turnout – November 2012: 55.9% (60.3%)

Summary of Work

A list of registered voters was created for the cities of Hilmar, Stevenson and Livingston by extracting voters from the Merced County list of Registered voters who have a Portuguese last name. The list of Portuguese last name was developed by the Portuguese American Citizenship Project. Reminder cards were sent out for the November, 2012 election.

Results

Overall voter turnout for Casa dos Açores was lower than Merced County for the June and November 2012. The Casa dos Açores turnout for the June Election was 18.8%, as compared to the county wide turnout of 26.6%. The Casa dos Açores turnout for the November Presidential Elections was 55.9%, compared with the county wide turnout of 60.3%.

Voter turnout for Casa dos Açores was lower for all age groups in the June election and in most age groups in November. Younger voters, age 18 - 40 had a higher voter turnout in the November Presidential Election than did Merced County. The overall turnout for older voters, age 60 and up was higher than younger voters, and turnout for all age groups was higher in November than in June for Casa dos Açores voters.

Voter turnout by gender could not be determined for Casa dos Açores because Merced County does not collect or maintain gender information for registered voters.

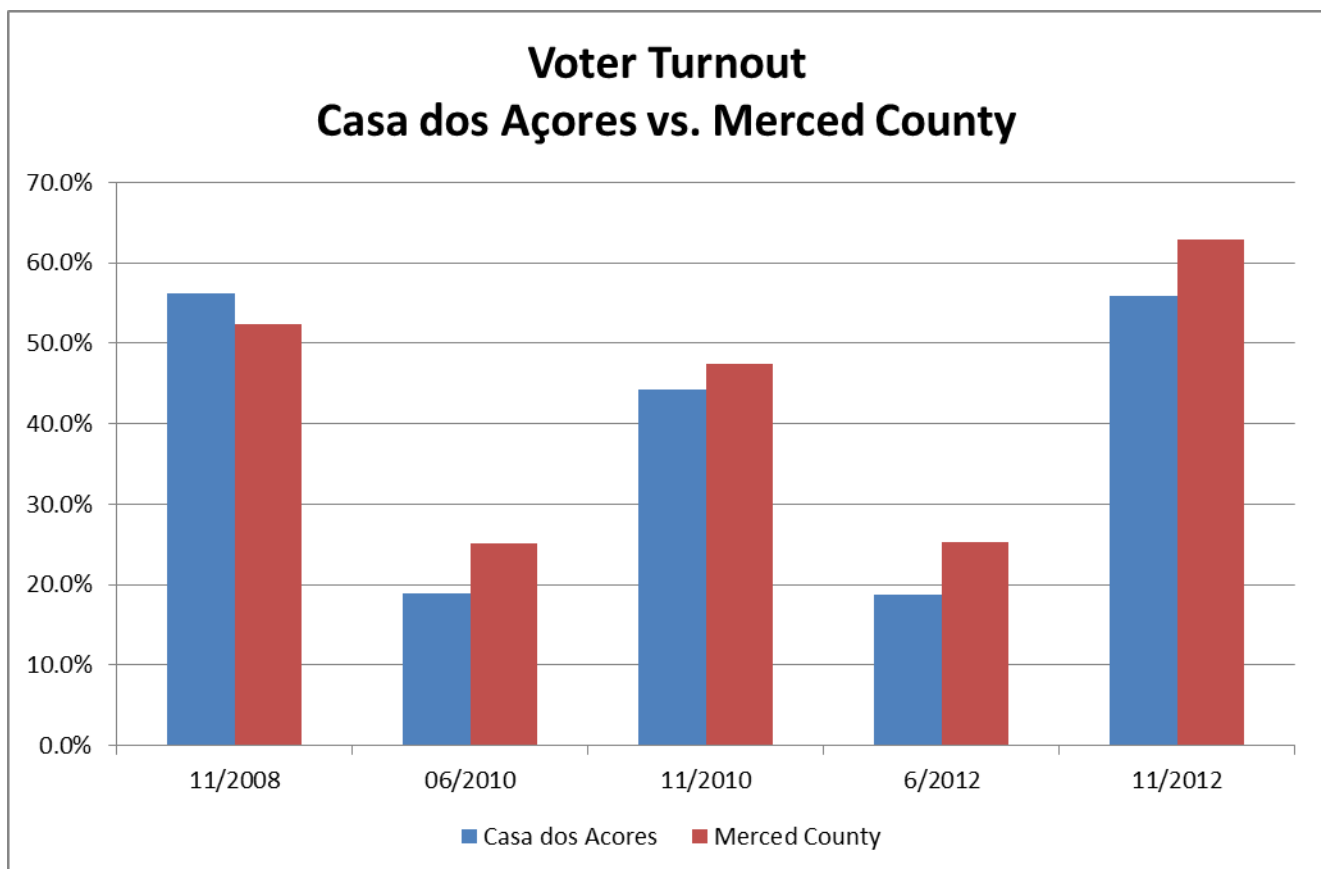
Younger voters, particularly in the 18-30 age group seem to be moving away from the established political parties and registering as independents. Also, Casa dos Açores voters in the 18-30 and 40-50 age

groups tend to be more conservative than Merced County with more registered Republicans than Democrats, while Casa dos Açores voters in the 60-70 and 70+ age groups have a higher Democratic registration than Merced County voters.

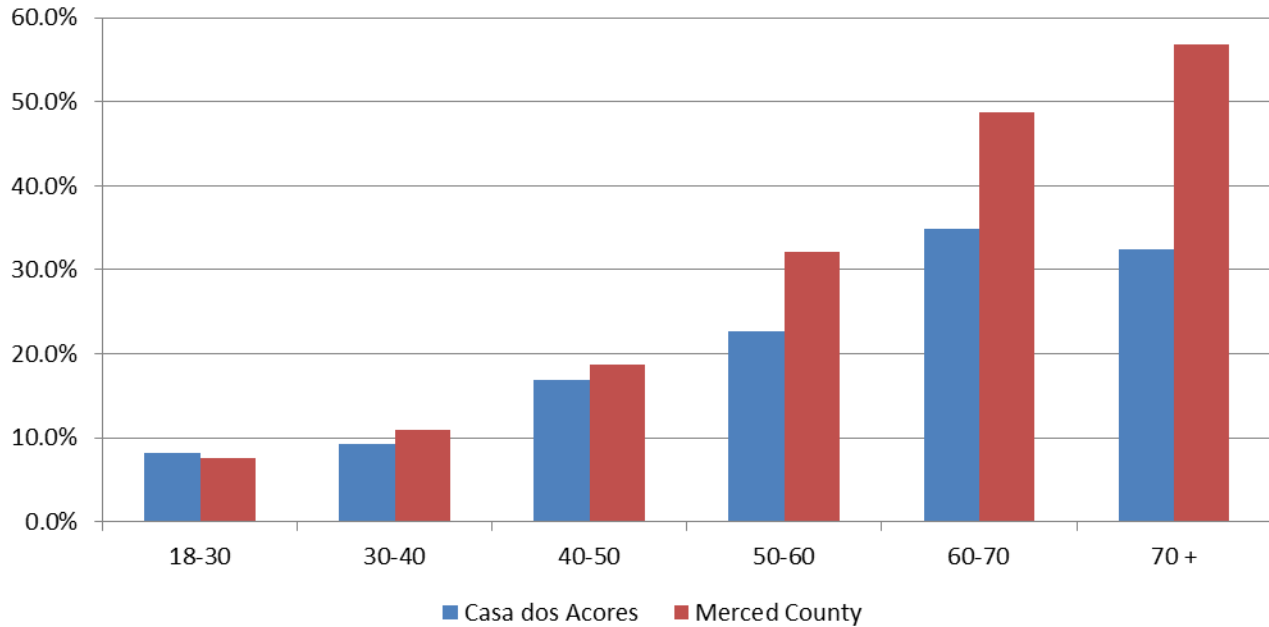
Voters in all age groups are moving more toward voting by absentee ballot rather than going to their local polling place, with the youngest and oldest voters leading this trend.

The following graphs summarize voter turnout for Casa dos Açores and Merced County.

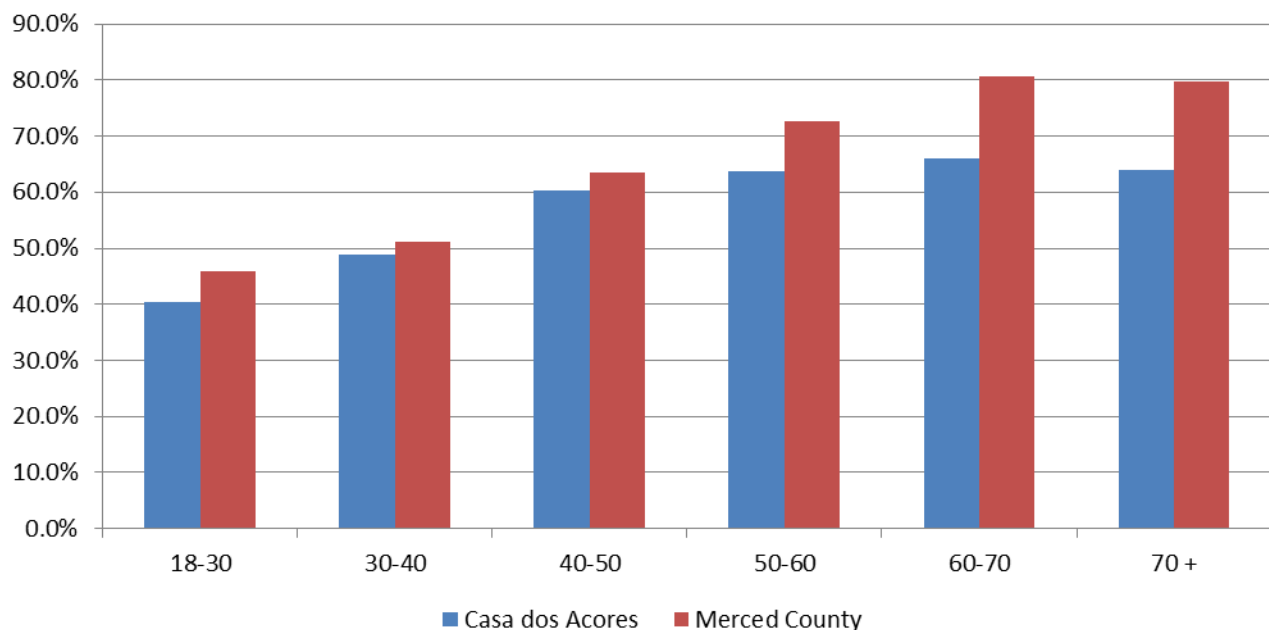
Results Graphs



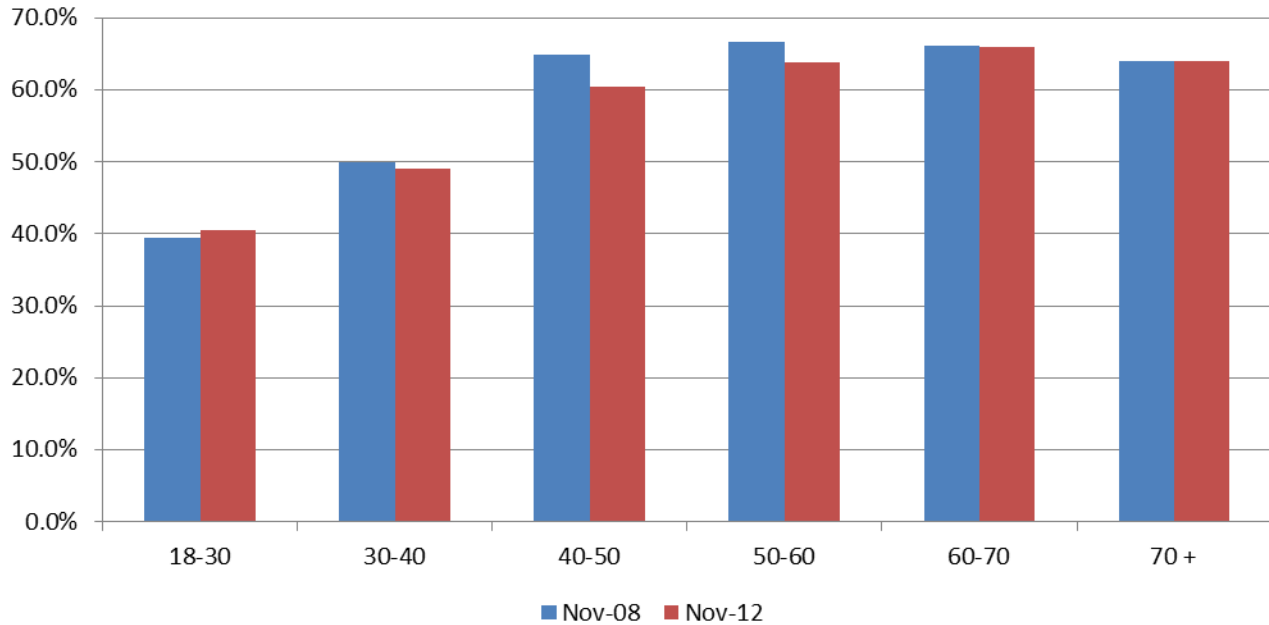
Turnout By Age - June 2012 Casa dos Açores vs. Merced County



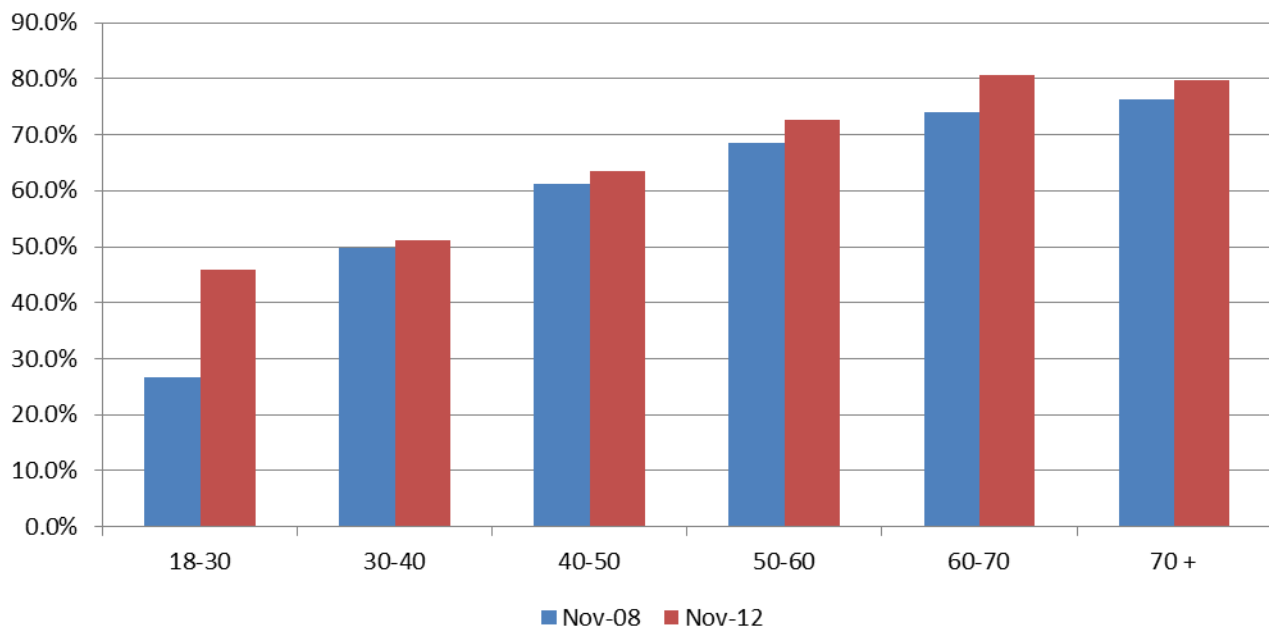
Turnout By Age - November 2012 Casa dos Açores vs. Merced County



**Voter Turnout
2008 vs. 2012 Presidential Elections
Casa dos Açores by Age**



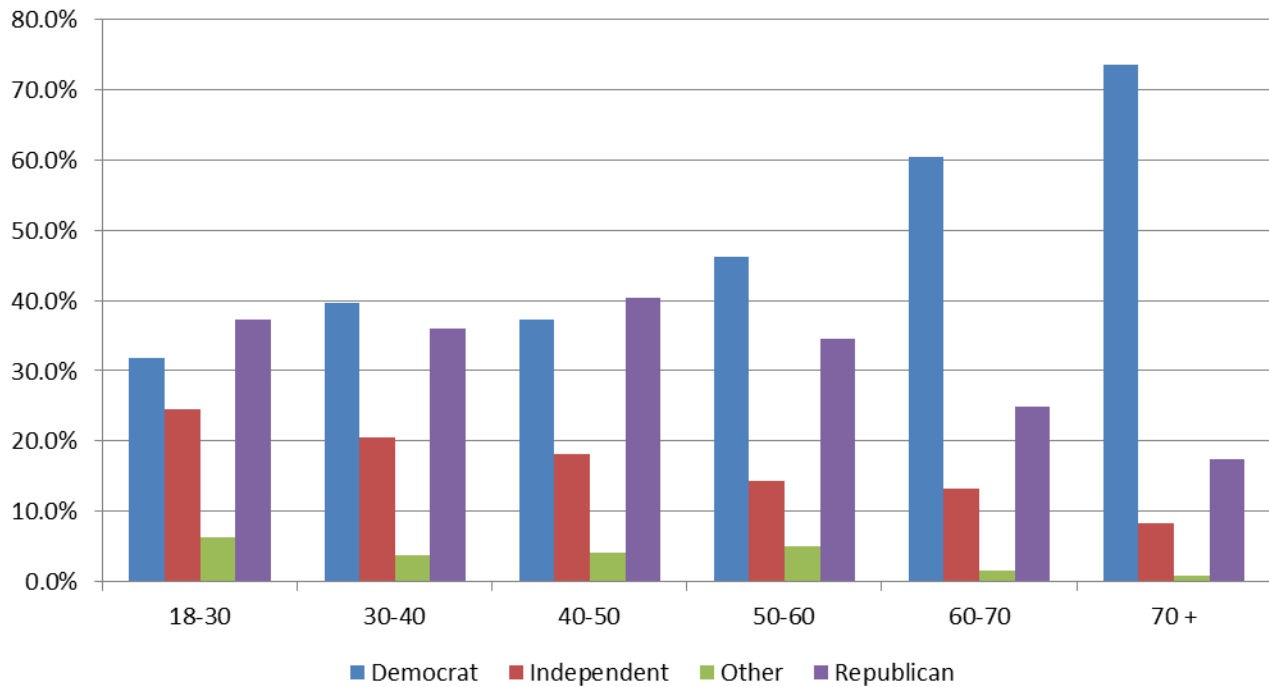
**Voter Turnout
2008 vs. 2012 Presidential Elections
Merced County by Age**



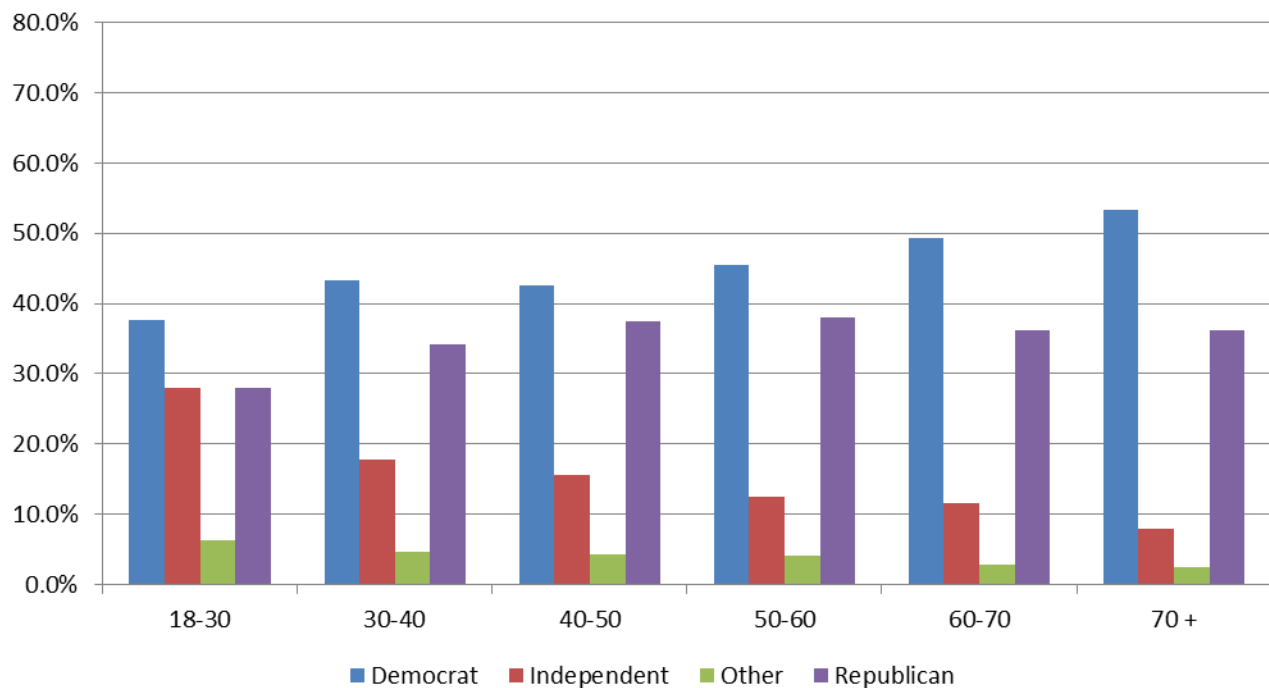
Appendices

Registered Voters by Age and Party	7
Voter Turnout by Age and Voting Method	8
Voter Turnout by Party and Voting Method	12
Registered vs. Actual Voters	14
Voted in both 2008 and 2012 Presidential Elections	15
Voted in all last three elections	15

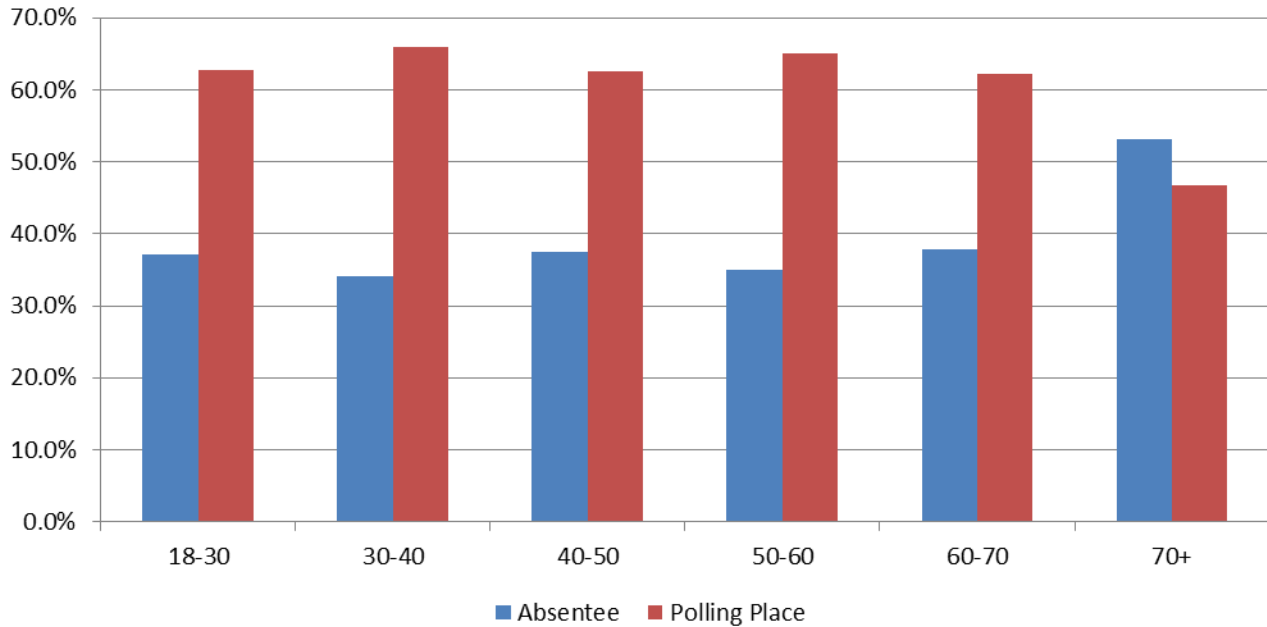
Registered to Vote by Age and Party Casa dos Açores - November 2012



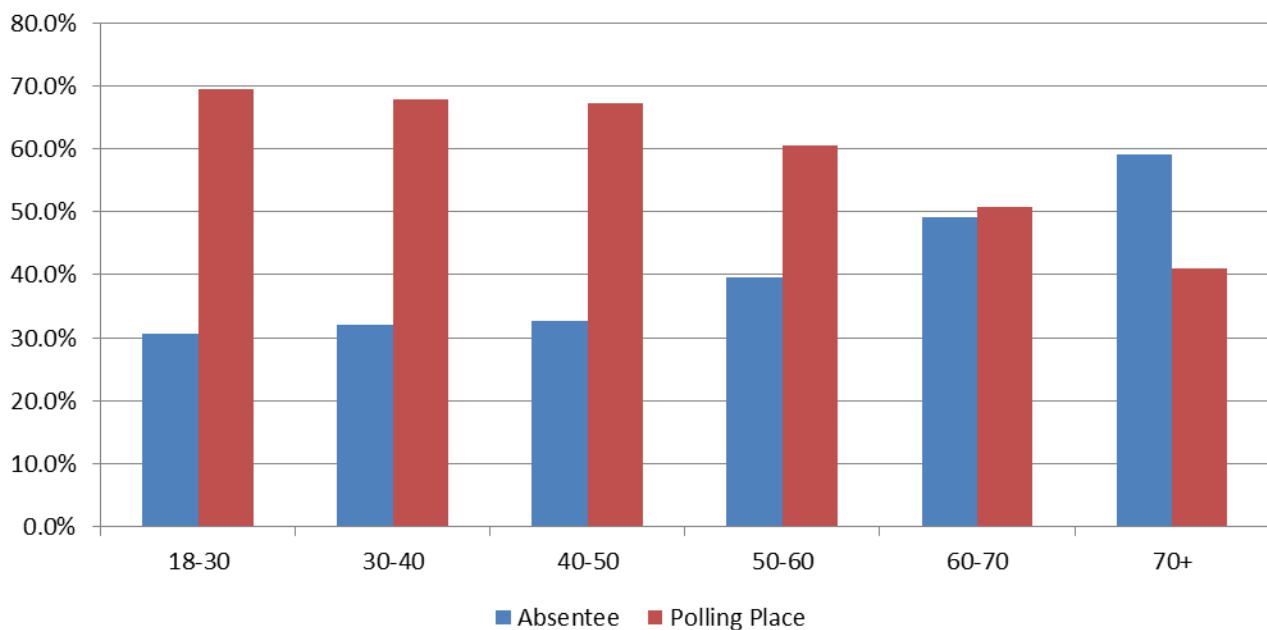
Registered to Vote by Age and Party Merced County - November 2012



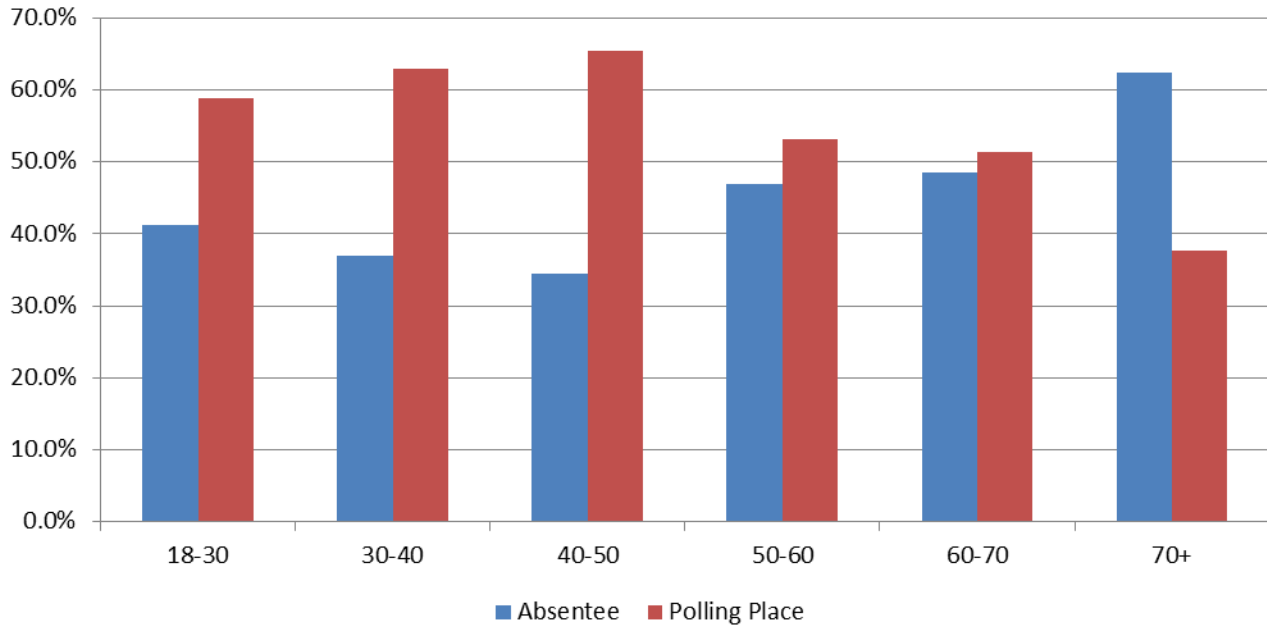
**Voter Turnout
By Age and Voting Method
Casa dos Açores - November 2008**



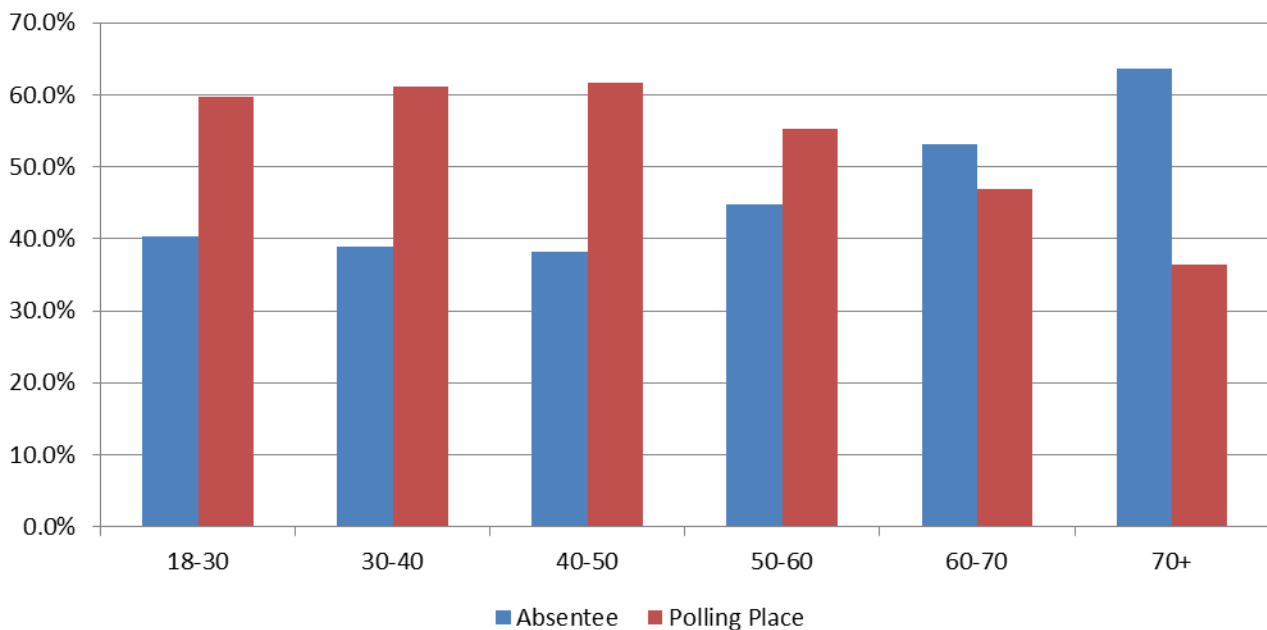
**Voter Turnout
By Age and Voting Method
Merced County - November 2008**



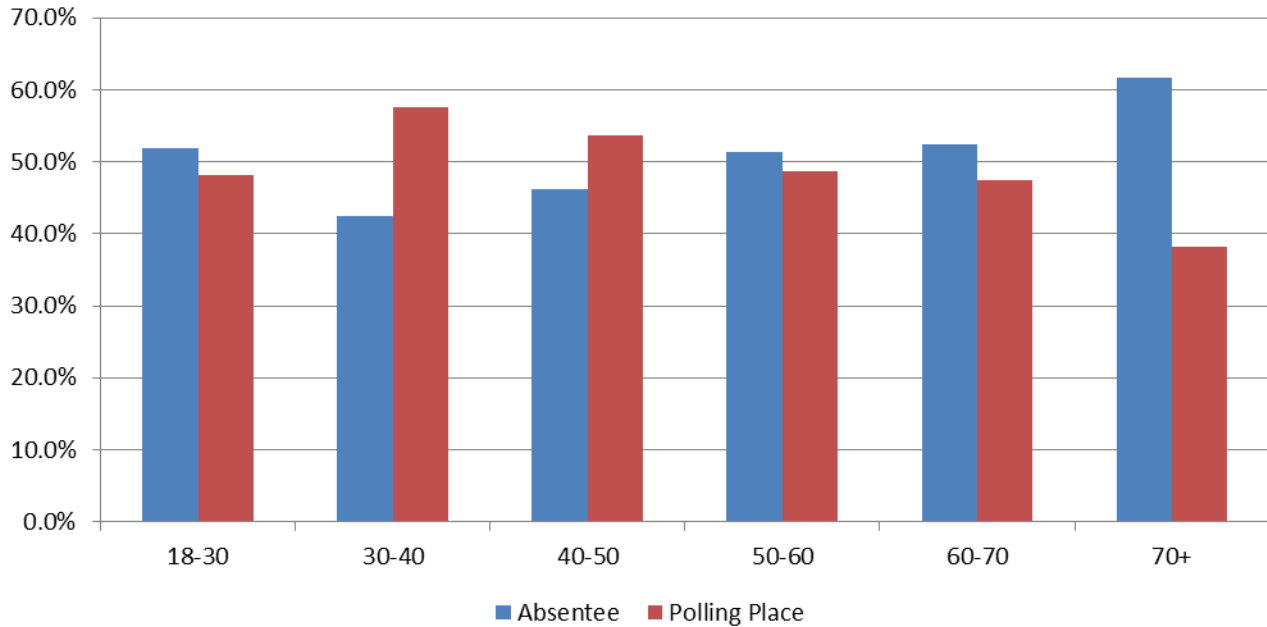
**Voter Turnout
By Age and Voting Method
Casa dos Açores - November 2010**



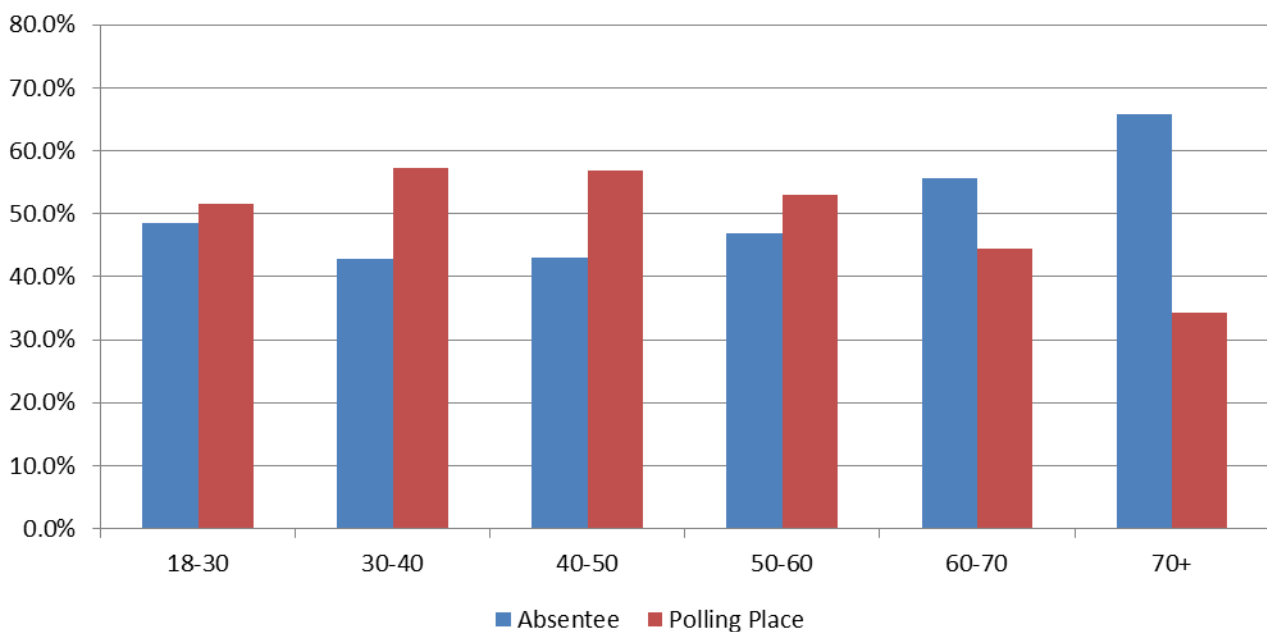
**Voter Turnout
By Age and Voting Method
Merced County - November 2010**



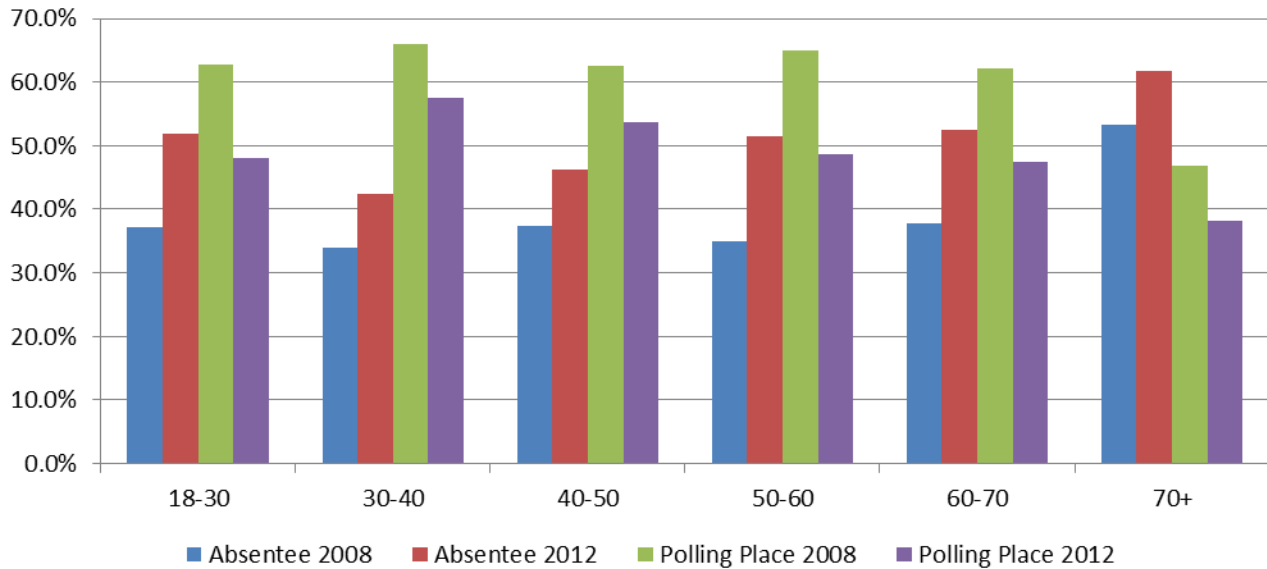
**Voter Turnout
By Age and Voting Method
Casa dos Açores - November 2012**



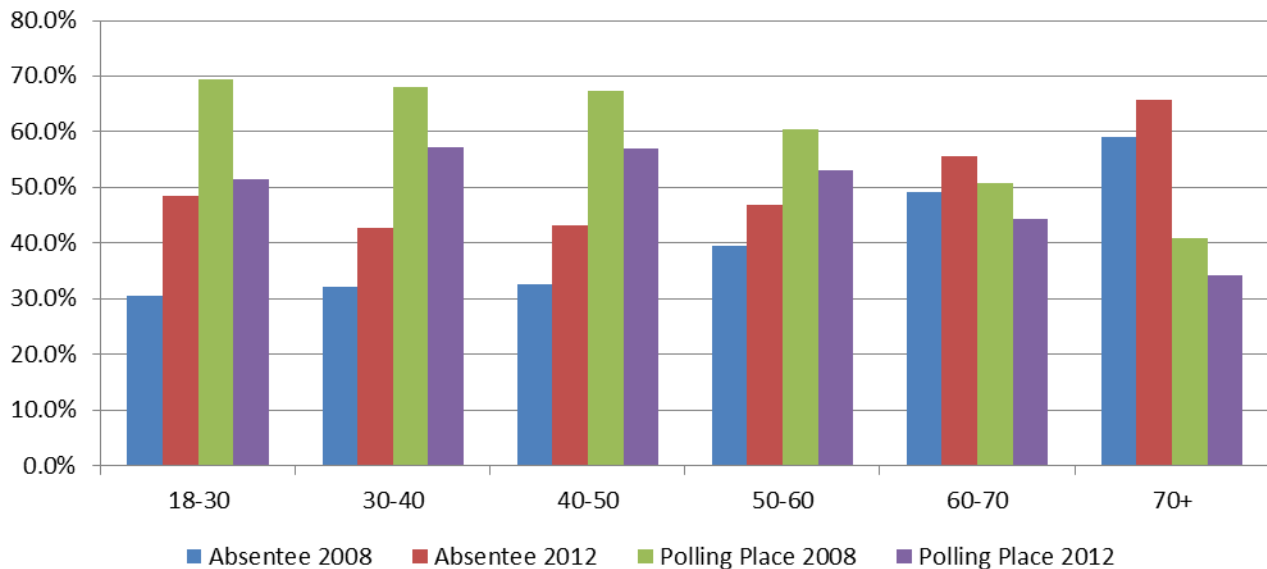
**Voter Turnout
By Age and Voting Method
Merced County - November 2012**



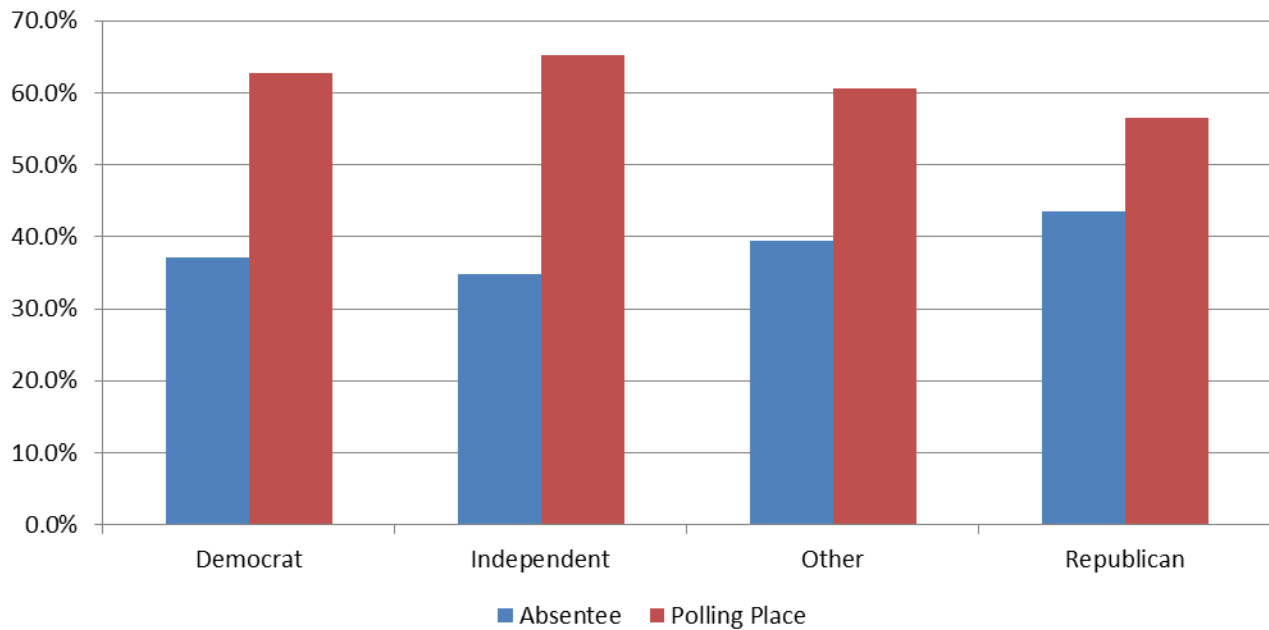
**Voter Turnout
By Age and Voting Method
Casa dos Açores
November 2008 vs. November 2012**



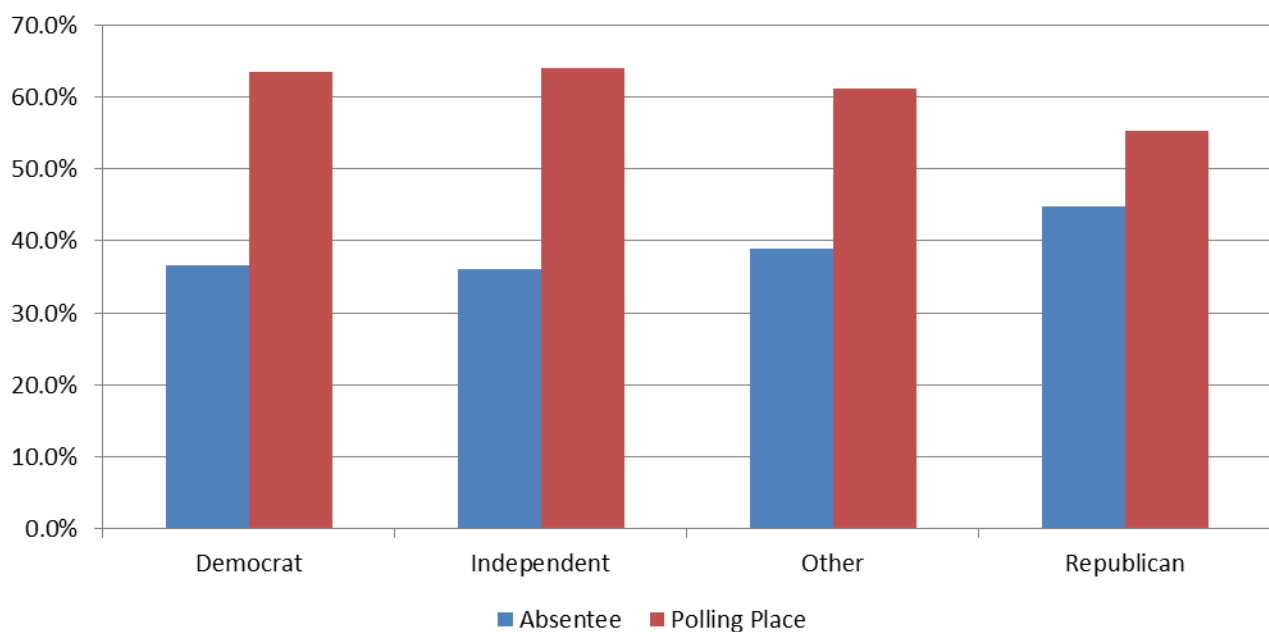
**Voter Turnout
By Age and Voting Method
Merced County
November 2008 vs. November 2012**



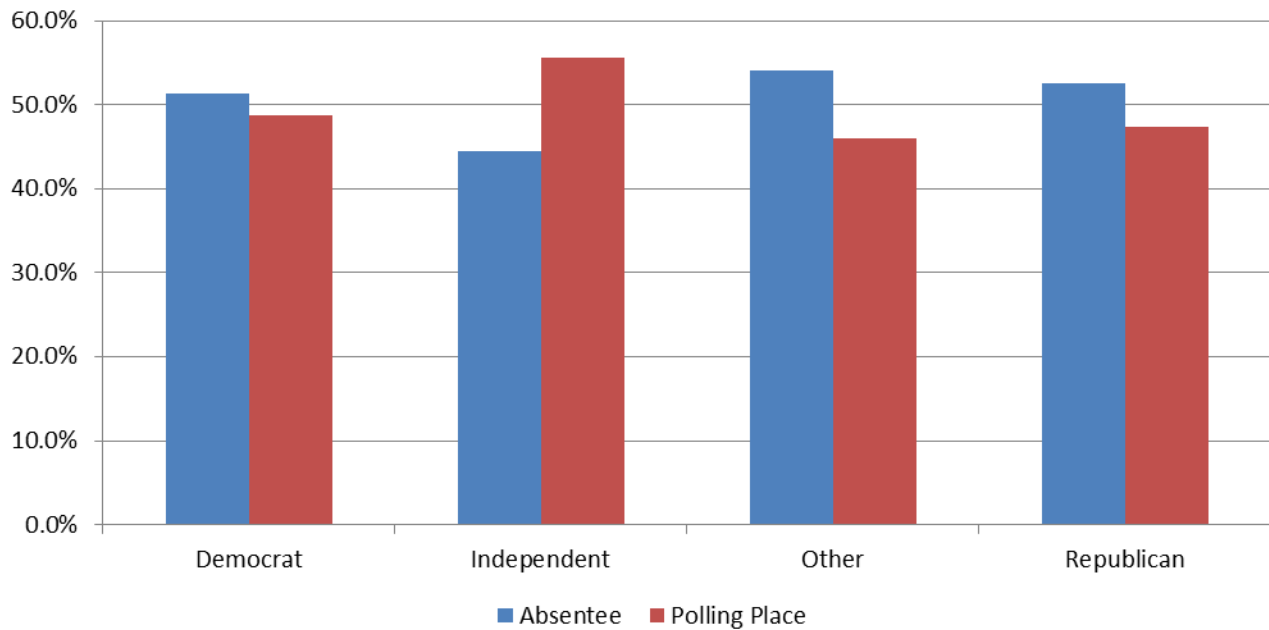
**Voter Turnout
by Party and Voting Method
Casa dos Açores - November 2008**



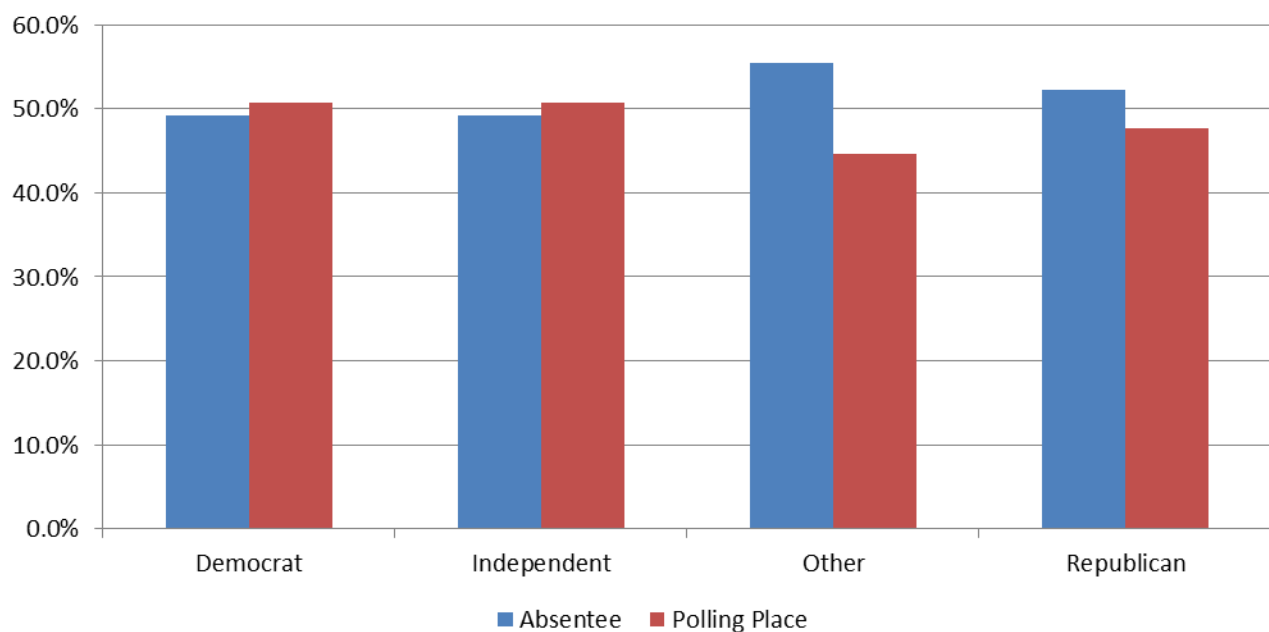
**Voter Turnout
by Party and Voting Method
Merced County - November 2008**



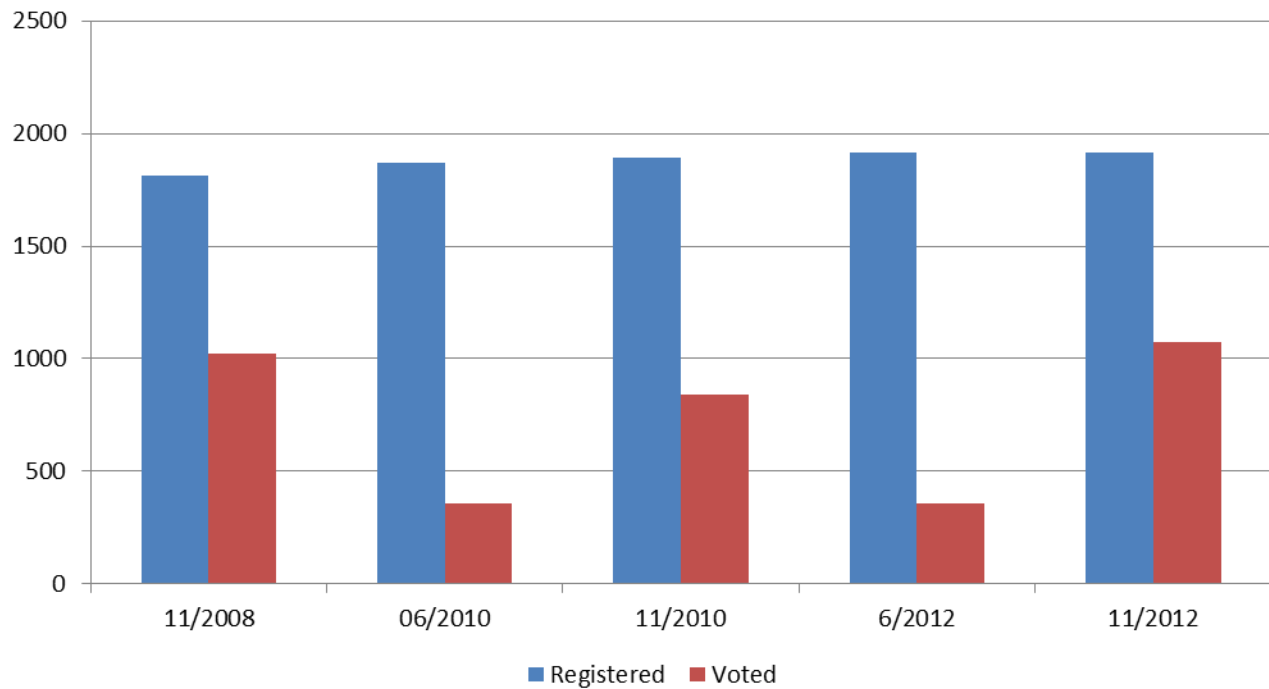
**Voter Turnout
by Party and Voting Method
Casa dos Açores - November 2012**



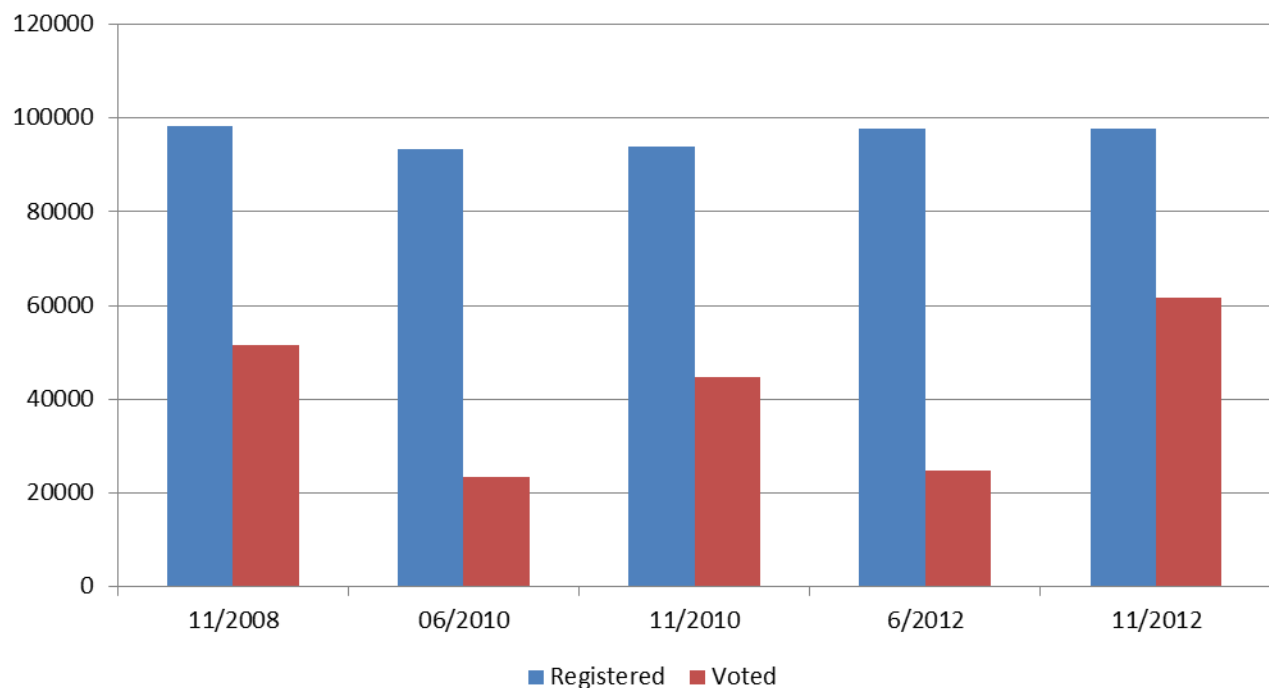
**Voter Turnout
by Party and Voting Method
Merced County - November 2012**



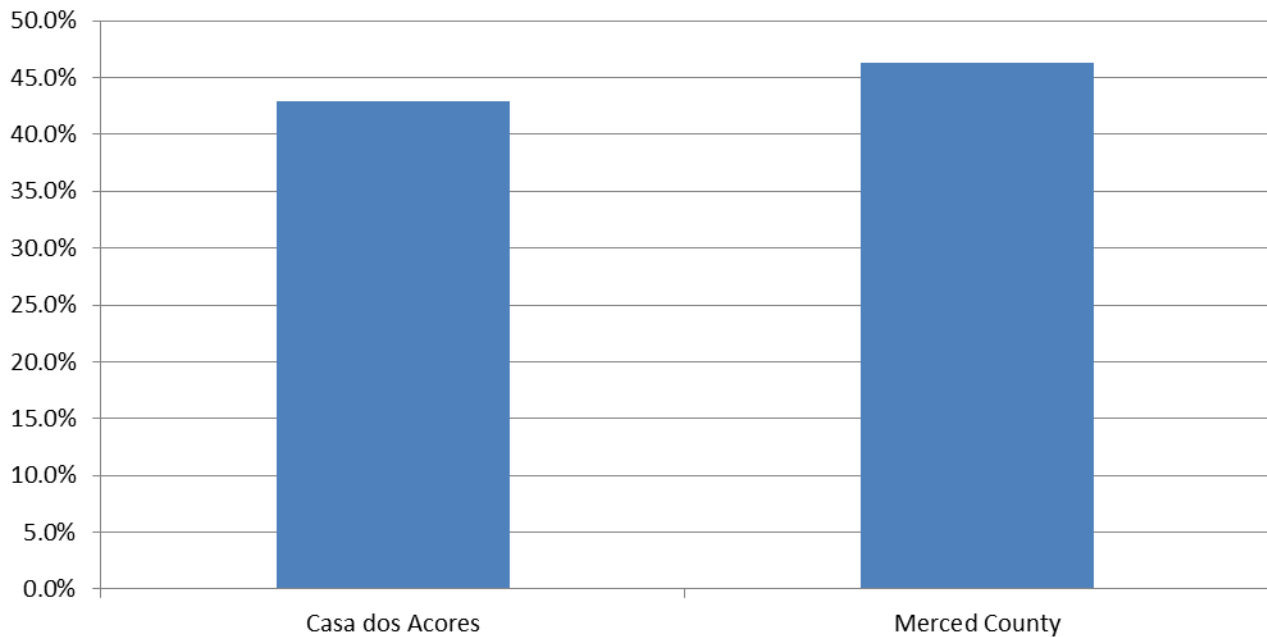
Registered Voters vs. Actual Voters Casa dos Açores



Registered Voters vs. Actual Voters Merced County



Voter Turnout
Voted in Both 2008 and 2012 Presidential Elections
Casa dos Açores vs. Merced County



Voter Turnout
Voted in Last 3 Elections
Casa dos Açores vs. Merced County

